

Advance your social business with IBM Notes and Domino 9.0 Social Edition software

Enterprise messaging that drives business success



Highlights

IBM® Notes® and Domino® 9.0 Social Edition software:

- Delivers modern, social tools to the business user
- Drives enhanced productivity with seamless integration of enterprise messaging and collaboration tools
- Connects people and ideas at the speed of business

Truly effective organizations understand that becoming more collaborative is a strategic imperative. They're leveraging innovative messaging and collaborative tools that their social networking, mobile device-wielding, cloud-enabled workforce uses to drive significant improvements in productivity and effectiveness.

IBM Notes and Domino 9.0 Social Edition software is an enterprise messaging and application platform that provides great flexibility and choice in deployment. Designed for simple, seamless integration of email and workflow applications with a broad range of social tools, it helps enhance productivity, improve decision making and accelerate response to rapidly changing marketplace conditions.

IBM Notes and Domino family of products

IBM Notes software offers easy-to-use email, calendar, contacts, to-do lists, corporate directories and related collaboration capabilities in a rich client that can be delivered to desktops, laptops, browsers and mobile devices.

IBM Domino software is so much more than an enterprise messaging server—it is a rapid application development platform that includes design and developer tools and a server runtime client in a single, easy-to-use package. And it can be delivered on premises, in the cloud or through hybrid deployments.

Long a marketplace leader in enterprise messaging, IBM Notes and Domino software has been powerfully enhanced to deliver exceptional, security-rich capabilities through a clean, intuitive and thoroughly modern interface that business users can start to use immediately. New and enhanced features include:

- **Embedded experiences.** Interact with content, including documents, images, videos, forms and even other applications, from directly inside your email, all delivered through industry-standard OpenSocial 2.0 containers.
- **Activity streams.** Monitor your network with an aggregated view of social information streams—such as microblogs, corporate and public social networks, social content management systems, and other socially enabled applications—and then comment, share and act on that information while inside your Notes environment.
- **Discover page.** Learn how to make the most of new features and capabilities, find introductory material for new users, get helpful hints and tips, and learn to use the new “Quick Links” tab to launch your workspace, mail, calendar and other Notes applications with a single click.
- **Additional enhancements.** Get even more value from a customizable icons menu bar; improved Live Text actions; faster email previewing, sorting, searching and filtering; calendar scroll-through viewing by month with color coding by category; simplified widget management; and much more.

IBM Notes and Domino product family components

The IBM Notes and Domino family comprises several core components that are seamlessly integrated.

IBM Notes and iNotes client software

In the cloud with IBM SmartCloud® Notes or on premises, IBM Notes and iNotes® clients bring together messaging (email), calendar, to-do lists, corporate directory, teamrooms, discussion forums, file sharing, microblogging, instant messaging and other applications into a unified, integrated offering. Delivered as a rich desktop client (IBM Notes software) or a browser-based client (IBM iNotes software) or to today's most popular mobile devices (through IBM Notes Traveler software), Notes technology provides a sleek, modern social user interface for a rich and engaging experience virtually anywhere. Users can interact with business and social content directly from their inbox through embedded experiences, which can also include access to business and social activity streams, such as social file sharing and application updates.

IBM Domino server and application platform software

With more than 10 million applications in use today, Domino software enables the design, delivery and administration of highly reliable, scalable and security-rich applications with lower total cost of ownership. Available through on-premises, cloud or hybrid deployments, Domino software drives enhanced productivity, streamlines business processes and helps improve overall business responsiveness through people-centric, workflow-driven business applications. Open standards-based XPages technology allows Domino developers to quickly and cost-effectively deliver applications to a variety of clients, including web and mobile. Security-rich features help safeguard business-critical information. And with the IBM Notes Browser Plug-in, Domino software is designed to quickly provide web access to all Notes and Domino applications as a lightweight alternative to customized or rich client access.

IBM SmartCloud Notes software

Reduce expenses, preserve application investments and simplify IT requirements by moving your Notes environment to the cloud with this software-as-a-service offering that provides access from practically anywhere at just about any time through a web browser or the Notes client.

IBM Domino Designer software

Available at no charge, IBM Domino Designer software is a visual design tool and editor that enables users to quickly build social, web, and mobile business and collaboration applications. With IBM Domino Designer software, in-house and independent software developers can use their existing skills—Java, CSS and others—to design scalable and security-rich collaboration and workflow-driven business applications. And IBM XPages technology allows novice and experienced developers to use their existing skills to quickly develop and extend their Domino applications.

IBM Notes Traveler software

This no-cost option extends Notes email, calendar and contacts to a broad array of mobile devices, including Google Android smartphones and tablets as well as Apple iOS, BlackBerry, Nokia and Microsoft Windows devices, for “anytime, anywhere,” security-rich access to business information.

IBM XWork Server software

This cost-effective, all-in-one platform enables developers to design, build and deploy security-rich social business applications that are ideal for departmental or smaller deployment applications. IBM XWork Server allows users to access collaborative and social solutions via web and mobile devices through modern-looking, easy-to-use collaborative and social user experiences. Applications built with XWork Server can store and pull data from relational and nonrelational data stores and connect to social communities for broader knowledge sharing.

Offering a variety of deployment options

IBM Domino software comes in a variety of licensing and deployment options to help meet your specific business needs:

- **IBM Domino Messaging Server software.** Ideal for hosting comprehensive messaging environments, either on premises or as IBM SmartCloud Notes software, this offering may be right for organizations that do not need to host additional social business applications.
 - **IBM Domino Enterprise Server software.** Host social business, collaboration and messaging applications with a comprehensive, security-rich platform.
 - **IBM Domino Utility Server software.** Host external, web-based social business applications designed for organizations that don't need Notes or iNotes messaging capabilities.
- **IBM XWork Server software.** This all-in-one, on-premises platform is made for designing, developing and hosting social business and departmental applications.
 - **IBM Domino Collaboration and Messaging Express® software.** Recommended for midsize companies, this security-rich, on-premises application and email environment offers comprehensive support for many of the latest Internet mail standards, calendar and scheduling, discussion and reference database capabilities as well as support for custom intranet and Internet applications.

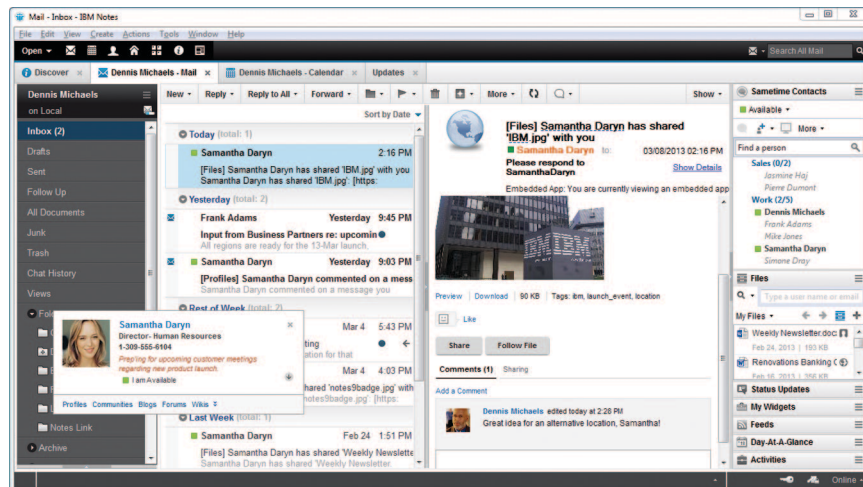


Figure 1. The clean, intuitive user interface puts your messaging, social collaboration tools and professional networks within easy reach.

Providing complementary solutions

In addition to these core components, additional IBM solutions are available to complement IBM Notes and Domino software.

These include:

- **IBM Connections software.** Engage the right people and accelerate innovation with a marketplace-leading enterprise social software platform. Your purchase of IBM Notes and Domino 9.0 Social Edition software entitles you to IBM Connections files and profiles applications at no additional charge. Connections files and profiles allow you to tap into the combined knowledge of multiple networks of professionals with a single click from the Notes client sidebar. Users can quickly find skills across their organization and share content without sending bulky files through email.
- **IBM Sametime® software.** The latest evolution of unified communications, IBM Sametime software provides integrated voice, data and video for efficient real-time collaboration. IBM Notes users are entitled to IBM Sametime Entry software, our entry-level Sametime offering, at no cost.
- **IBM Lotus® Protector software.** Create a security-rich collaboration environment and protect confidential business information with this family of email security and encryption offerings, which transparently integrate with IBM Notes and Domino software and mixed messaging infrastructure.

- **IBM Mobile Connect software.** Deploy highly secure mobile virtual private networks to extend instant messaging and enterprise applications to your mobile workforce.
- **IBM Enterprise Integrator for Domino software.** Integrate data from IBM DB2®, Oracle, SAP and other third-party sources to extend the reach of your Domino applications with on-premises, server-based software that supports the easy exchange of external data.

Connecting people and ideas at the speed of business

The increasing speed of business demands faster, more flexible and easier-to-use communications and collaboration tools. With IBM Notes and Domino 9.0 Social Edition software, IBM offers one of the industry's most comprehensive messaging and collaboration solutions. It offers a fresh and intuitive interface that lets business users get started right away with the rich functionalities and social capabilities needed to create a comprehensive platform for social business.

Bring the benefits of social business to your organization. Upgrade your existing installation, or install IBM Notes and Domino Social Edition software for the first time.

Learn more at: <http://ibm.co/NotesDomino>

For more information

To learn more about IBM Notes and Domino 9.0 Social Edition, please contact your IBM representative or IBM Business Partner, or visit the following website: <http://ibm.co/NotesDomino>

Additionally, IBM Global Financing can help you acquire the software capabilities that your business needs in the most cost-effective and strategic way possible. We'll partner with credit-qualified clients to customize a financing solution to suit your business and development goals, enable effective cash management, and improve your total cost of ownership. Fund your critical IT investment and propel your business forward with IBM Global Financing. For more information, visit:

ibm.com/financing



© Copyright IBM Corporation 2013

IBM Corporation
Software Group
Route 100
Somers, NY 10589

Produced in the United States of America
July 2013

IBM, the IBM logo, ibm.com, Domino, and Notes are trademarks of International Business Machines Corp., registered in many jurisdictions worldwide. Other product and service names might be trademarks of IBM or other companies. A current list of IBM trademarks is available on the web at "Copyright and trademark information" at ibm.com/legal/copytrade.shtml

The trademark BlackBerry is owned by BlackBerry and is registered in the United States and may be pending or registered in other countries. IBM is not endorsed, sponsored, affiliated with, or otherwise authorized by BlackBerry.

Java and all Java-based trademarks and logos are trademarks or registered trademarks of Oracle and/or its affiliates.

Microsoft and Windows are trademarks of Microsoft Corporation in the United States, other countries, or both.

All references to Renovations refer to a fictitious company and are used for illustrative purposes only.

This document is current as of the initial date of publication and may be changed by IBM at any time. Not all offerings are available in every country in which IBM operates.

It is the user's responsibility to evaluate and verify the operation of any other products or programs with IBM products and programs.

THE INFORMATION IN THIS DOCUMENT IS PROVIDED "AS IS" WITHOUT ANY WARRANTY, EXPRESS OR IMPLIED, INCLUDING WITHOUT ANY WARRANTIES OF MERCHANTABILITY, FITNESS FOR A PARTICULAR PURPOSE AND ANY WARRANTY OR CONDITION OF NON-INFRINGEMENT. IBM products are warranted according to the terms and conditions of the agreements under which they are provided.



Please Recycle

 **A d v a n t i x .**
Groupware AG

Bahnhofstrasse 33b
CH - 8703 Erlenbach
Tel +41 44 914 88 44
Fax +41 44 914 88 45
welcome@advantix.ch