



Z1 SecureMail End2End

Internal Email Encryption and Signature for Fixed and Mobile Clients

Z1 SecureMail End2End enables the use of email encryption and signature in the internal mail system. With this Z1 SecureMail extension Zertificon provides effective and efficient means for end-to-end encryption.

Need for Internal Encryption

Central server based encryption servers are recognized as ideal solution to assure email privacy and compliance in business communications. Those gateway solutions enable policy enforcement. Zertificon's own Z1 SecureMail Gateway provides a flexible and mature appliance solution for enterprises of all sizes and industries.

A need for the protection of email is not only apparent for the external exchange via Internet but also for the exchange via internal transmission paths. With the increased use of mobile devices such as smart phones for business email communication, where data is transferred via external mobile networks, there is an obvious need for end-to-end encryption.

Z1 SecureMail End2End has been specially designed to satisfy this need. This flexible Z1 SecureMail Gateway extension provides internal email encryption for fixed and mobile clients.

How Z1 End2End works

Z1 SecureMail End2End realizes a highly secure S/MIME tunnel for the communication between fixed and mobile clients and Z1 SecureMail Gateway and supports the communication among the clients themselves. There is no need for client installations because Z1 SecureMail exploits the already existing S/MIME functions of standard email programs like MS Outlook, Lotus Notes, Blackberry, etc.

Z1 SecureMail End2End provides email security in public mobile

networks independently from provider specific proprietary encryption solutions. Internal email signatures for integrity validation are also supported.

Emails get decrypted at the gateway and flexibly re-encrypted as they pass through on the way to and from the Internet. Just before the re-encryption between internal and external networks takes place, an access for content filters, DLP and archive systems can be configured.

The external email traffic is handled and secured by Z1 SecureMail as usual. Every single email is treated individually according to the configured policies. This ensures an extraordinarily flexible secure communication that is executed autonomously and stays transparent for internal users.

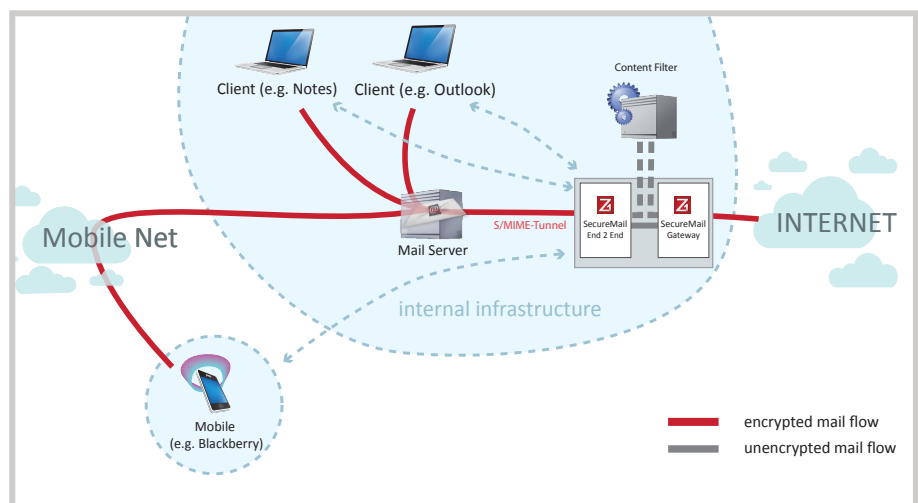


Fig.1: Infrastructure model

Unrelated to the internal S/MIME protection emails can externally be flexibly secured according to the recipient's requirements:

- PKI encrypted (S/MIME, OpenPGP) or via DE-Mail
- via TLS or VPN SecureChannel
- password encrypted as PDF (Z1KickMail PDF) or via secure Webmailer (Z1 WebSafe)

Zertificon's flexible licensing for economic efficiency

Z1 SecureMail offers the right solution for all challenges in the field of email encryption and email signature. You only license the features and functions that are needed in your individual email infrastructure and only the volume that you want to use. Naturally, you can easily increase both volume and functions anytime to suit your needs.

Policy Matching with Z1 SecureMail Gateway

Z1 SecureMail End2End Policies that determine the internal email processing can be combined with Z1 SecureMail Gateway policies for external email processing. Strict policy enforcement can be configured globally or for specific users, groups or domains.

Examples:

- All outbound emails that were encrypted by Z1 SecureMail End2End must also be encrypted for transmission over the Internet.
- All incoming emails that were encrypted by the external sender must be delivered via the S/MIME tunnel.

Integration of Mobile Clients (Blackberry, iOS, Android etc.)

The S/MIME tunnel for internal encryption is supported by default with Blackberry devices. Emails sent via other mobile device platforms (iOS, Android, etc.) can also be protected by Z1 SecureMail End2End in the very near future.

PKI necessary and provided

Internal encryption only works with an internal PKI. Microsoft CAs or any other X.509 standardized solution can be used. Z1 SecureMail End2End comes with its own Onboard PKI that can be used if there is no PKI in place yet.

Depending on the configuration the internal PKI can be entirely

encapsulated and Z1 SecureMail Gateway works with certificates from public trust centers as usual. The separation of signature and encryption certificates is flexibly configurable for the internal and the external encryption.

Physical or Virtual Appliance

The integration of Z1 SecureMail End2End extension into an organisation's email infrastructure can be accomplished directly on the Z1 SecureMail Gateway or with an independent installation on a separate appliance.

Real End-to-End Encryption

The internal encryption realized via the mentioned S/MIME tunnel technically speaking results in a decryption with instant re-encryption on the Z1 SecureMail Gateway. For the realization of a real end-to-end encryption the internal clients need to encrypt with an external certificate. Both, the real end-to-end encryption and the flexible de- and re-encryption mode can be operated in parallel with Z1 SecureMail End2End.

Advice and Support

Depending on the existing email infrastructure and the desired functions there are various requirements to be considered for the integration of encryption solutions. With our vast experience in providing email encryption solutions for enterprises of all sizes and industries we are happy to offer advice and assistance to find the right solution for your requirements.

Z1 SecureMail End2End Overview

- Multi-tenant architecture
- Flexibly scalable system
- Clustering capability
- LDAP interfaces
- HSM support
- EBusiness applications support
- Smart card support
- Mobile client support
- Available as virtual appliance (VmWare/Xen) and hardware based appliance
- Compatible to most S/MIME standardized infrastructures

Zertificon Service and Support

Our customers appreciate the exemplary service and support they receive. There is a direct line to our highly qualified staff. Our fast reaction and resolution times demonstrate competent and flexible support for the installation and operation of Z1 products - whether you can reach us only workdays or around the clock is up to you.